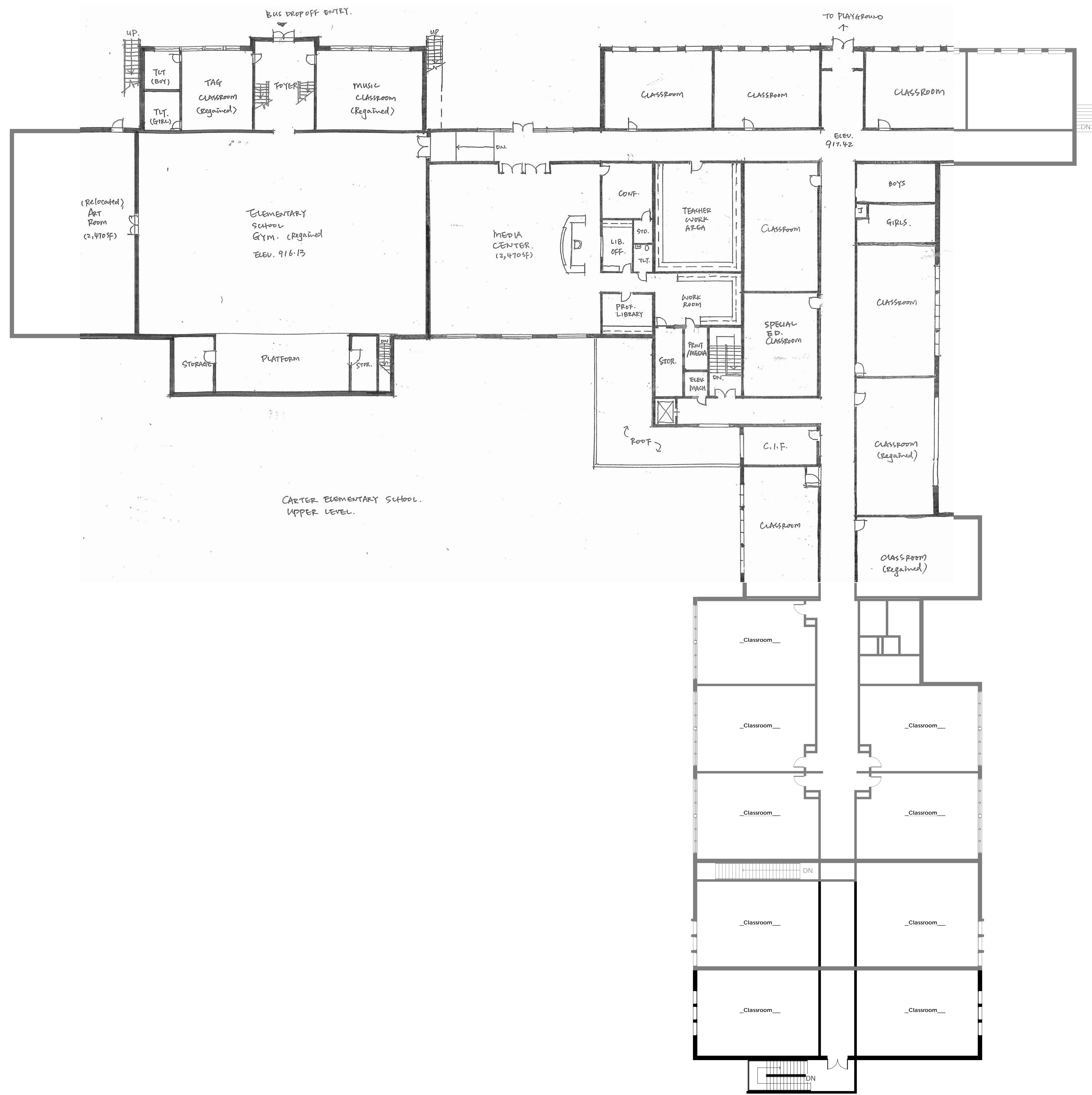


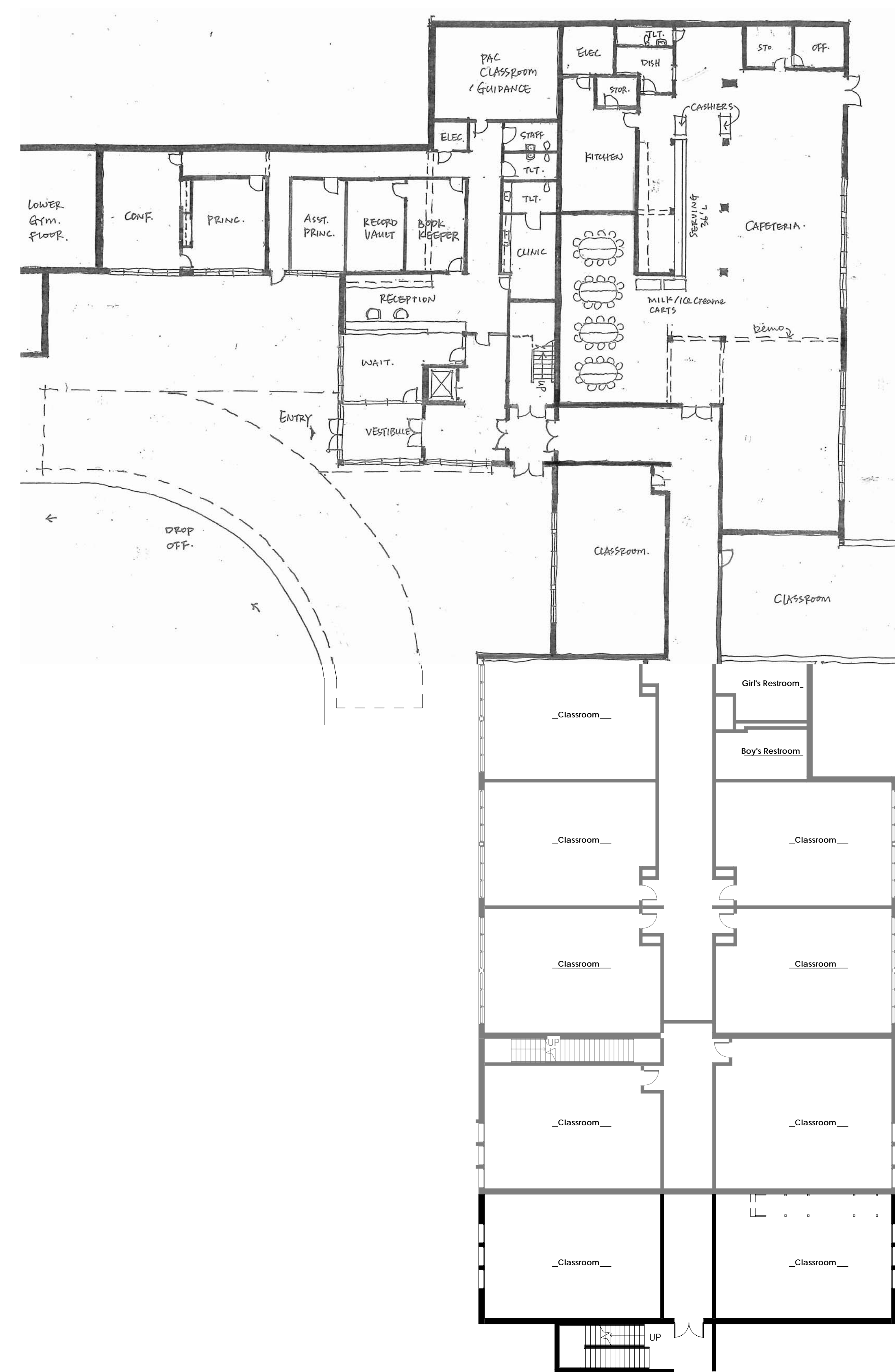
BINDING EDGE

BINDING EDGE

BINDING EDGE



1 ES Main Level Overview
1/16" = 1'-0"



2 ES Lower Level Overview
1/16" = 1'-0"

TIME / DATE: 1/14/2010 11:52:10 AM

**MCCARTY
HOLSAPLE
MCCARTY**
MHM
ARCHITECTS
& INTERIOR
DESIGNERS

550 W. MAIN STREET, SUITE 300
KNOXVILLE, TENNESSEE 37902

CONTACT: POC/MCARTY, JEFF KERSHNER
EMAIL: JEFF@MCMCCARTY.COM
PHONE: (865) 544-2000
FACSIMILE: (865) 544-0002
INTERNET: mhmnc.com

PROJECT INFORMATION

CONTRACT: SBC-0000000000000000

Carter Schools
9304 College Street Strawberry Plains, TN 37871
KNOXVILLE, TENNESSEE 00000-000

JURISDICTION INFORMATION

STATE	TENNESSEE
CITY	KNOXVILLE
COUNTY	KNOX
ZONING	ZONING
PARCEL	Parcel
BUILDING CODE	IBC 2009
OCCUPANCY	COMMERCIAL
BUILDING TYPE	(UN) PROTECTED; (UN) SEMI-DET.
GROSS AREA	300 SF
HEIGHT ALLOW.	
NO. OF EXITS	
PARKING	HDP
NO. OF FIXTURES	HDP
SERVICE SINCS	

CODES OFFICIAL REVIEW

ACTIVE DESIGN PHASE

SCHEMATIC DESIGN

DESIGN DEVELOPMENT

RED-CHECK

CONSTRUCTION DOCUMENTS

CONSTRUCTION BIDDING PHASE

CONSTRUCTION ADMINISTRATION

PRELIMINARY
PACKAGE
NOT FOR
CONSTRUCTION

KEY PLAN:

REVISION INFORMATION

NO.	DATE	DESCRIPTION

DRAWING INFORMATION

SCALE: 1/16" = 1'-0"

SCALE GUIDE:

DATE ISSUED: 01/14/09

PREPARED BY: J.C. NAME

DESIGNED BY: AUTHO

CHECKED BY: PROJECT CHECKED BY